



Life
Rama 4 - Asoke

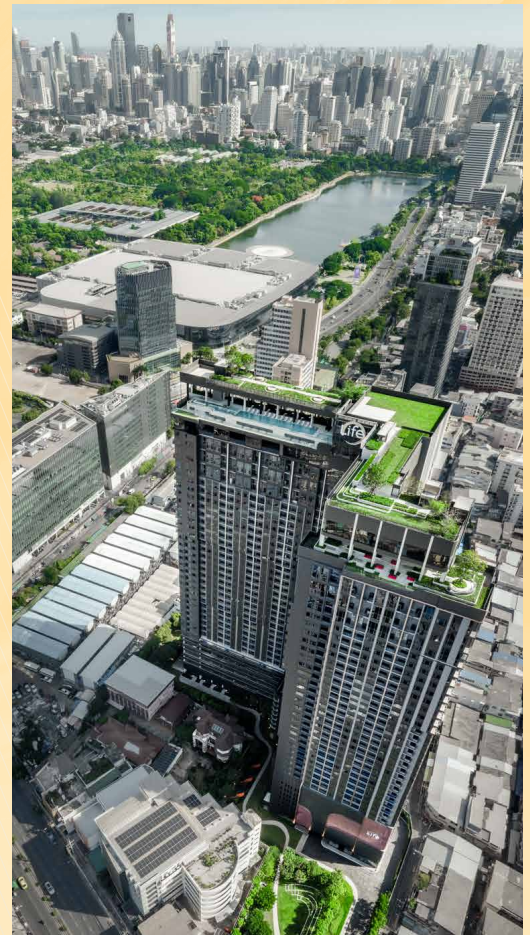
CHOOSE LIFE CHOOSE EVERYTHING

ENJOY A PANORAMIC VIEW OF BANG KACHAO



LIFE RAMA 4 – ASOKE, a 39-storey high-rise condominium was designed for people who choose to live a multi-faceted life. We understand the needs of this new firebrand generation. That you require a central location, complete facilities, beautiful views and a wide variety of room types to meet your very specific requirements.

Here, your life would be complete.
Here, you can choose everything.





PROJECT INFORMATION

PROJECT Life Rama 4 - Asoke
LAND Approximately 5-2-7.5 Rai
LOCATION Rama 4 Rd.
UNIT 1,237 Units + 2 Shops

39-STOREY

G FLOOR Facilities

- Sylvan Park
- The Reception
- Semi Outdoor Lobby
- The Parlour
- Playfulness Bar
- Chill Out Lab
- The Green Tunnel

P2 - P8 FLOOR Parking

9th - 32nd FLOOR Residential

32nd - 35th FLOOR Residential

33rd - 36th FLOOR Residential

36th - 39th FLOOR Facilities

- Swimming Pool & Jacuzzi
- Sundown Terrace
- The Muscle Factory
- The Common
- The Circular Lounge
- Sky Studio

ROOF Rooftop Garden

CHOOSE A MULTI-FACETED LIFE

PRIME LOCATION

Life in the Rama 4 – Asoke neighbourhood means living at the centre of everything. With easy access to convenient transportation, this location helps you level-up your fast-track living.

QUINTUPLE FACILITIES

Complete in all relaxation and work functions, the 5 rai, 5-storey facility comprises facilities and amenities on 4 continuous floors.

STUNNING VIEWS

The residence offers 3 distinct and different panoramic views; the Bang Krachao bend in the Chao Phraya river, the lush greenery of Benjakitti park and magnificent cityscape views of modern Sukhumvit.

NEW VERSION OF CO-WORKING SPACE

Designed to serve the unique demands of the new generation, our co-working space enables you to work from anywhere.

GROUND FLOOR





9th FLOOR



11th - 14th FLOOR



15th - 24th FLOOR

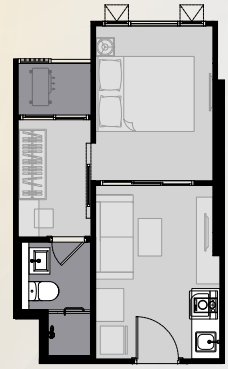




26.50 SQ.M.



28.50 SQ.M.



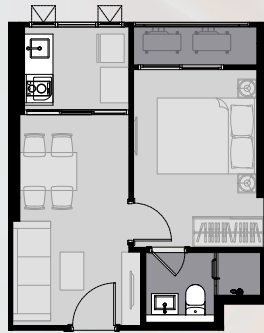
28.50 SQ.M.



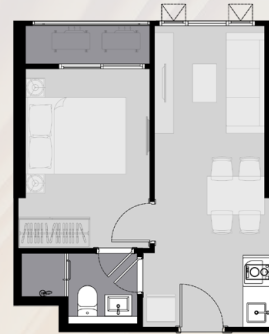
30.00 SQ.M.



1 BEDROOM 28.50 SQ.M.



32.00 SQ.M.



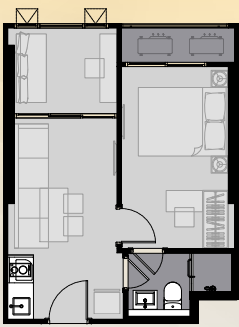
32.00 SQ.M.



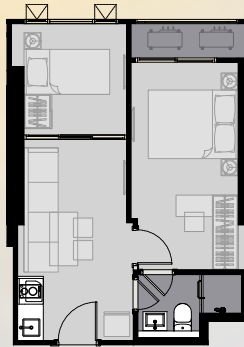
1 BED ROOM 32.00 SQ.M.



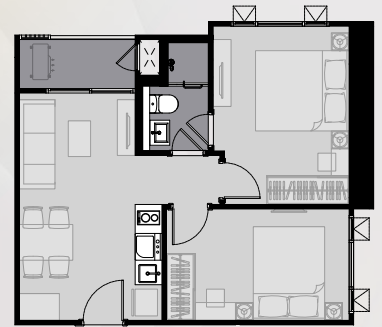
1 BEDROOM PLUS 35.00 SQ.M.



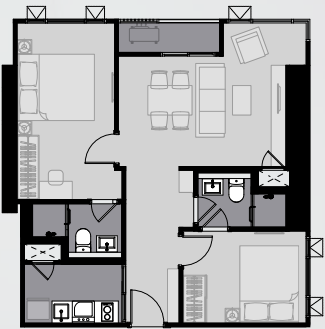
35.00 SQ.M.



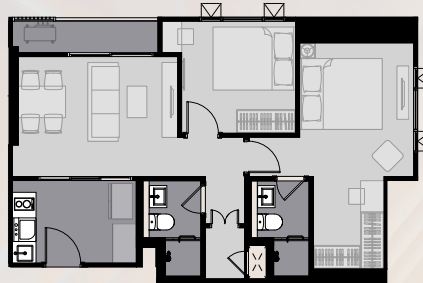
38.00 SQ.M.



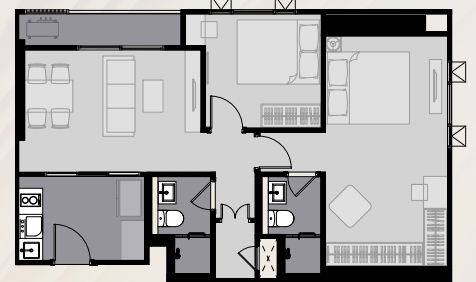
47.00 SQ.M.



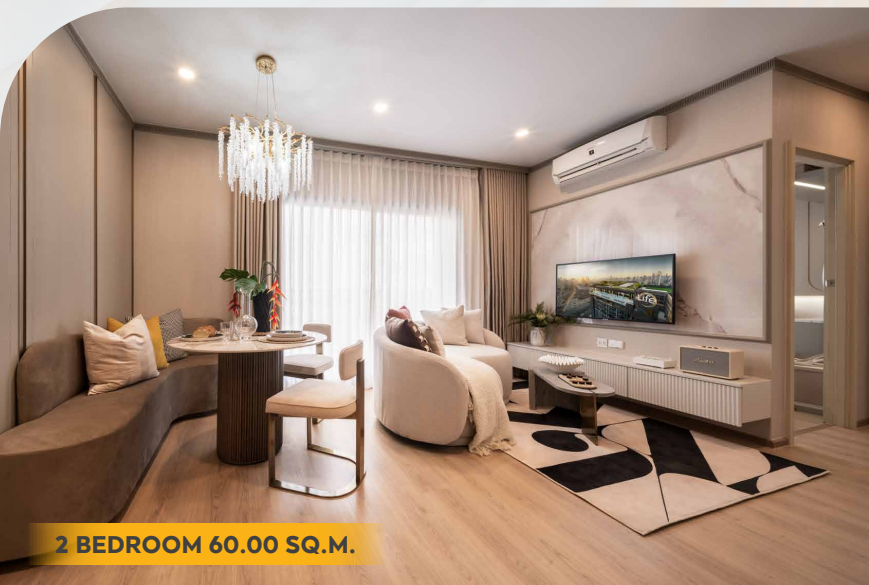
60.00 SQ.M.



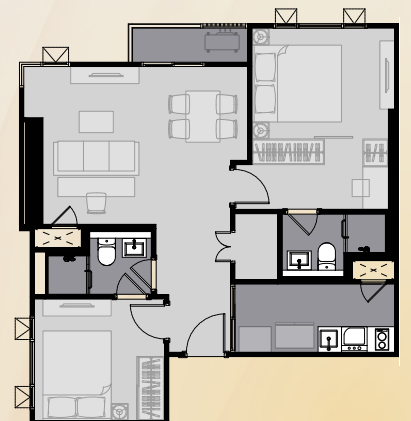
60.00 SQ.M.



65.00 SQ.M.



2 BEDROOM 60.00 SQ.M.



65.00 SQ.M.